

EXIT

DURA-GLIDE®

EXIT

2000/3000

SLIDING DOOR SYSTEMS



Stanley Automatic Door Systems - the safest, most cost effective solutions available today.

STANLEY®

STANLEY[®]

TECHNOLOGY,
ENGINEERING &
PERFORMANCE

Dura-Glide 2000 and 3000

sliding door systems

combine state-of-the-art

microprocessor technology

with advanced engineering

to provide the safest, most

dependable and highest-

performance door-systems

in the industry today.

The Dura-Glide 2000 and

3000 Series are the industry

standard for smooth, reliable

operation in every application

from high-traffic retail loca-

tions to upscale professional

and institutional settings.

Dura-Glide 2000 and 3000

are certified for Class 1 & 10

Clean Room applications.

All components are fully

tested and preassembled at

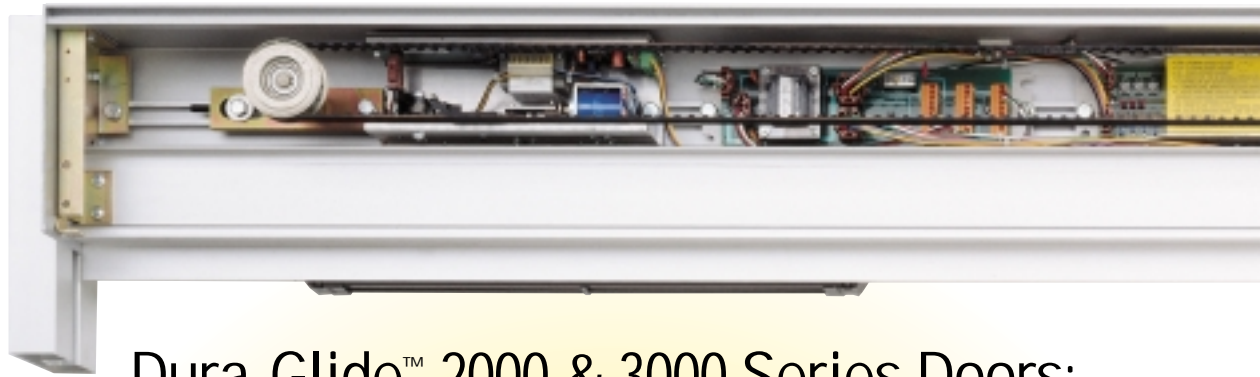
the factory prior to shipping.

Preassembled header

components mean fast,

trouble-free, installation at

the job site.



Dura-Glide™ 2000 & 3000 Series Doors:

- Microprocessor controller continually monitors door position.
- Proven reliability with long-lasting cast urethane load-bearing wheels provides smooth, trouble-free operation.
- Adjustable anti-riser wheels locks each door in its track.
- Fiberglass reinforced toothed drive belt prevents slippage and uneven closing.
- Advanced motion sensors, Stan-Guard® threshold sensor, and doorway holding beam or Stan-Vision™ video sensors, provide complete protection at all times.
- Weather Wise™ switch reduces opening widths on larger door systems to save energy in cold or hot weather.
- Power-operated automatic sliding doors may be used as emergency egress doors because they "break-out" in the direction of egress.

The Dura-Glide 2000 and 3000 Series meets the demands for use in Airports, Hotels, Hospitals, Supermarkets, Retail, Office Buildings, Public Buildings, Schools, Universities and more!



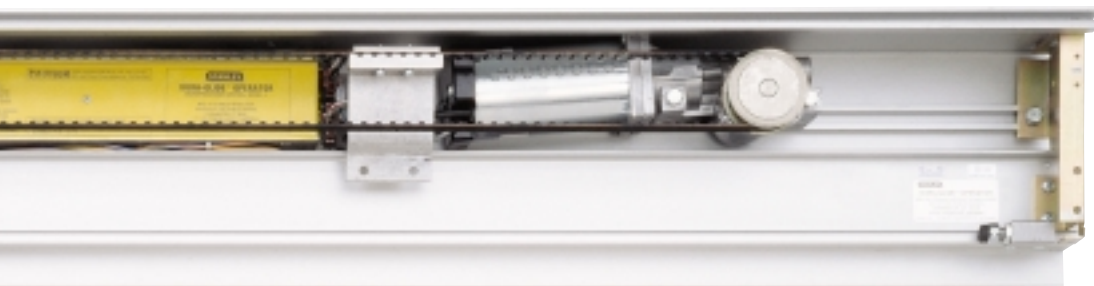
AIRPORTS & HOTELS



HEALTHCARE



SUPERMARKETS



OPTIONAL FEATURES

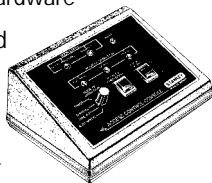
- Class 1 and 10 Clean Room rating for clean rooms and computer centers.

- Wind Resistant Damper improves safety and reduces repair costs by withstanding wind gusts up to twice that of a standard door package.



- Transom Packages.
- All-Glass Doors and Sidelights provide added elegance and beauty for upscale architecture.
- Designer/Utility package gives maximum design flexibility with wood, hollow metal, painted or full glass doors.

- Access Control lets you add card readers, electric locks and panic hardware to limit access to restricted areas.
- Access Control Consoles provide four modes of door operation — Timer, Manual, One-Way and Automatic.
- Electric Solenoid Locking System utilizes a high torque stainless steel spring and tension spring.



STANLEY SU-100 MOTION SENSORS

Stanley offers the SU-100 as a standard activation system. The uni-directional function only detects approaching traffic to reduce the length of time the door stays open, providing savings on loss of heat and air conditioning.



SAFETY SYSTEM

The Stan-Guard® threshold sensor and a doorway holding beam. The Stan-Guard® and doorway holding beam detect people or objects in the door area and holds the doors open until the threshold area is clear.

STAN-VISION™ DIGITAL SURVEILLANCE CAMERA THAT AUTOMATES DOORS (option)



- Safety & motion detection in one sensor.
- Continues to detect motion when door is inactive.
- Computer configurable sensor zones.
- Redundant safety zone coverage.
- Built-in diagnostics.
- Ignores parallel traffic.
- IP64 waterproof rating.
- Self-adjusts to environmental changes.
- Fail safe operation if camera is obstructed.
- Operates in temperatures ranging from -30° to 130° F.
- Continuous safety coverage even while door is in motion.



OFFICE & PUBLIC BUILDINGS

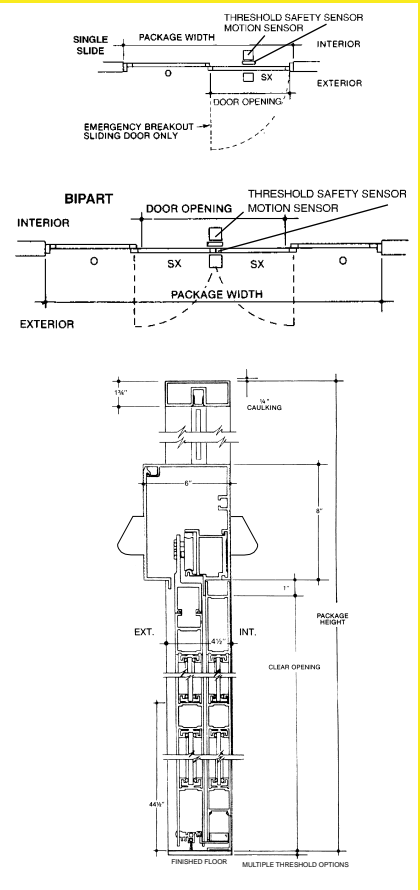


RETAIL

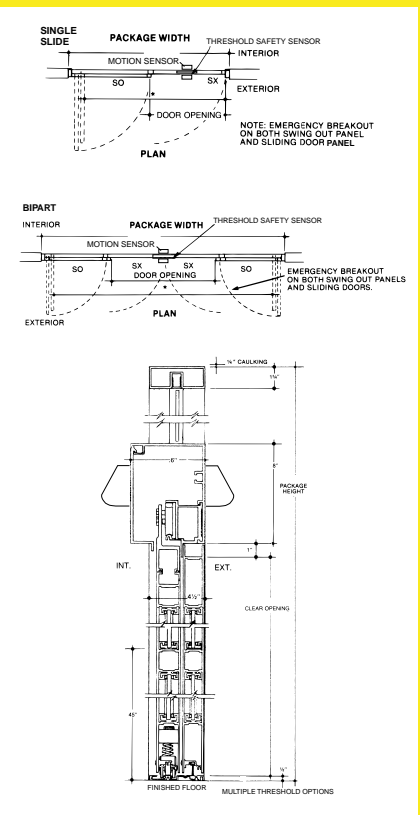


SCHOOLS & UNIVERSITIES

DURA-GLIDE™ 2000 SERIES



DURA-GLIDE™ 3000 SERIES



NOTE: Transom Package Available for both 2000 & 3000 Series

Dura-Glide® 2000/3000 Series

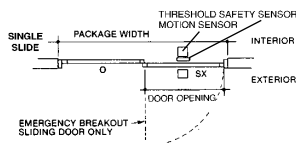
FEATURES:

- All models available in bi-part (double sliding) or single slide configuration.
- Fiberglass Reinforced Toothed Timing Belt
- Maximum Panel Weight - Up to 400lb (with heavy duty option)
- Door Panels : Glass, Aluminum, Wood, Metal or Custom
- Speed Range: (based on size & weight of the door)
 - Opening Speeds — .5' - 2.5' per sec.
 - Closing Speeds — .5' - 1.5' per sec.
- Clear Door Opening Typical Width: 3' - 6'

BREAKOUT: (System is disabled when panels breakout)

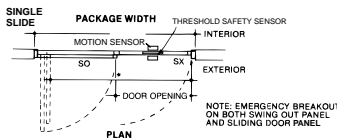
DG 2000 —

External Sliding Panels Only



DG 3000 —

Full or All Panels Breakout



MICROPROCESSOR CONTROLLER:

- Adjustable Opening & Closing Speed
- Adjustable Distance & Speed of Breaking
- Adjustable Reduced Opening
- Adjustable Time Delay
- Auto Reverse on Obstruction
- Slow Speed Search for Obstruction

DRIVE SYSTEM:

- 1/4 HP DC Gear Driven Motor
- Twin 1/4 HP DC Gear Driven Motors (Optional)

Door packages are custom manufactured to fit your job requirements. For sizes greater or smaller than typical, contact your authorized Stanley Access Technologies Sales Representative.

HEADER SIZE: 8" (203mm) high x 6" (152mm) deep
TYPICAL HEIGHT: 7'-8" (2.3m), clear door opening of 6'-11" (2.1m)
TYPICAL WIDTH: Single Slide: 7' to 9" (2.1m to 2.7m), clear door opening width of 35-1/2" to 47-1/2" (901mm to 1206mm). Bi-Part: 10' to 14' (3m to 4.2m), clear door opening width of 48" to 72" (1219mm to 1828mm)
TYPICAL DOOR PANEL WEIGHT: up to 220 pounds each (100kg)
DRIVE SYSTEM: 1/4 HP DC motor, gear drive, toothed belt
CONTROLLER: microprocessor based, safety logic, watchdog LED
SENSORS: 2 for motion (switchable between uni-directional and bi-directional) and 1 Stan-Guard® and doorway holding beam for safety. Stan-Vision™ Digital Video Cameras Optional. Mats, wallplates, radio control optional.
BREAKOUT: SX panel on the 2000, SX and SO panels on the 3000
POWER REQUIRED: 120 VAC, 5 amps min.
CODE COMPLIANCE: UL, cUL, ANSI A156.10, UBC, BOCA, ICBO, NFPA 101

Service & Installation

Stanley Access Technologies designs, manufactures and markets automatic door systems worldwide.

For more than 65 years, we have set the global standard for smooth, quiet operation, user safety, design flexibility, quality, reliability and ease of installation. Our service force is North America's largest and most comprehensive network devoted to the installation and maintenance of automatic door systems. This network combines the global resources of Stanley with the unmatched customer responsiveness of local organizations to ensure every door we sell and install provides our customers with worry-free operation.

For Service, Call Stanley Toll Free: 1-800-7-ACCESS (1-800-722-2377)



Puertas Automaticas y Manuales de León
 Tel: 477 7714433 / 7713333

<http://www.puertautomaticasmanualesdeleon.com.mx>